



AARSLEFF

Q3

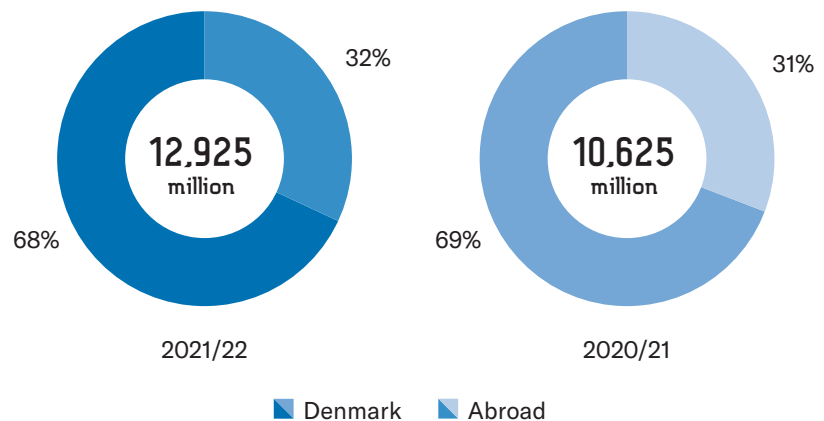
INVESTOR RELATIONS

2021/22

Q3 IN FIGURES

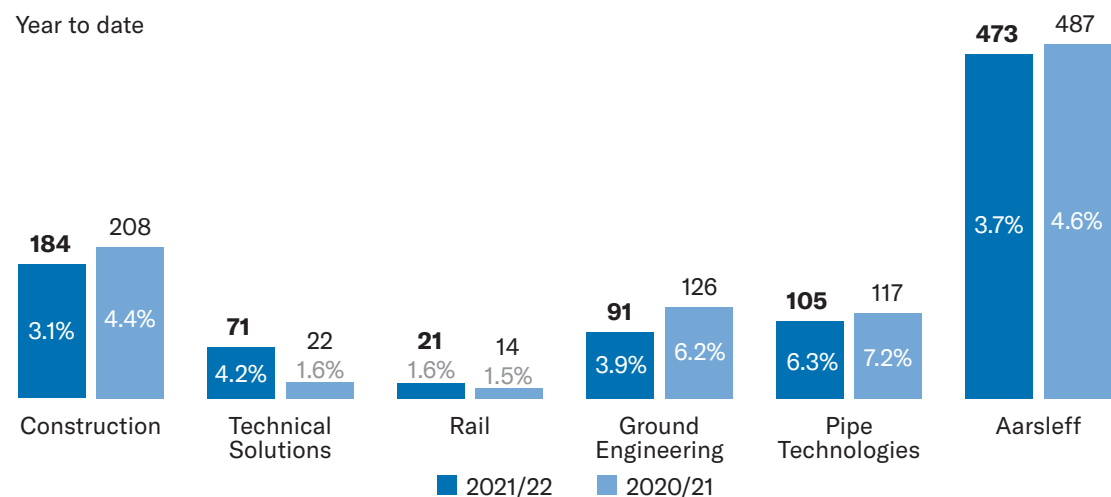
Revenue

Year to date



EBIT (million) and EBIT margin (%)

Year to date



CONSTRUCTION



Revenue

5,942M

2020/21: 4,691M

Segment results (EBIT)

184M

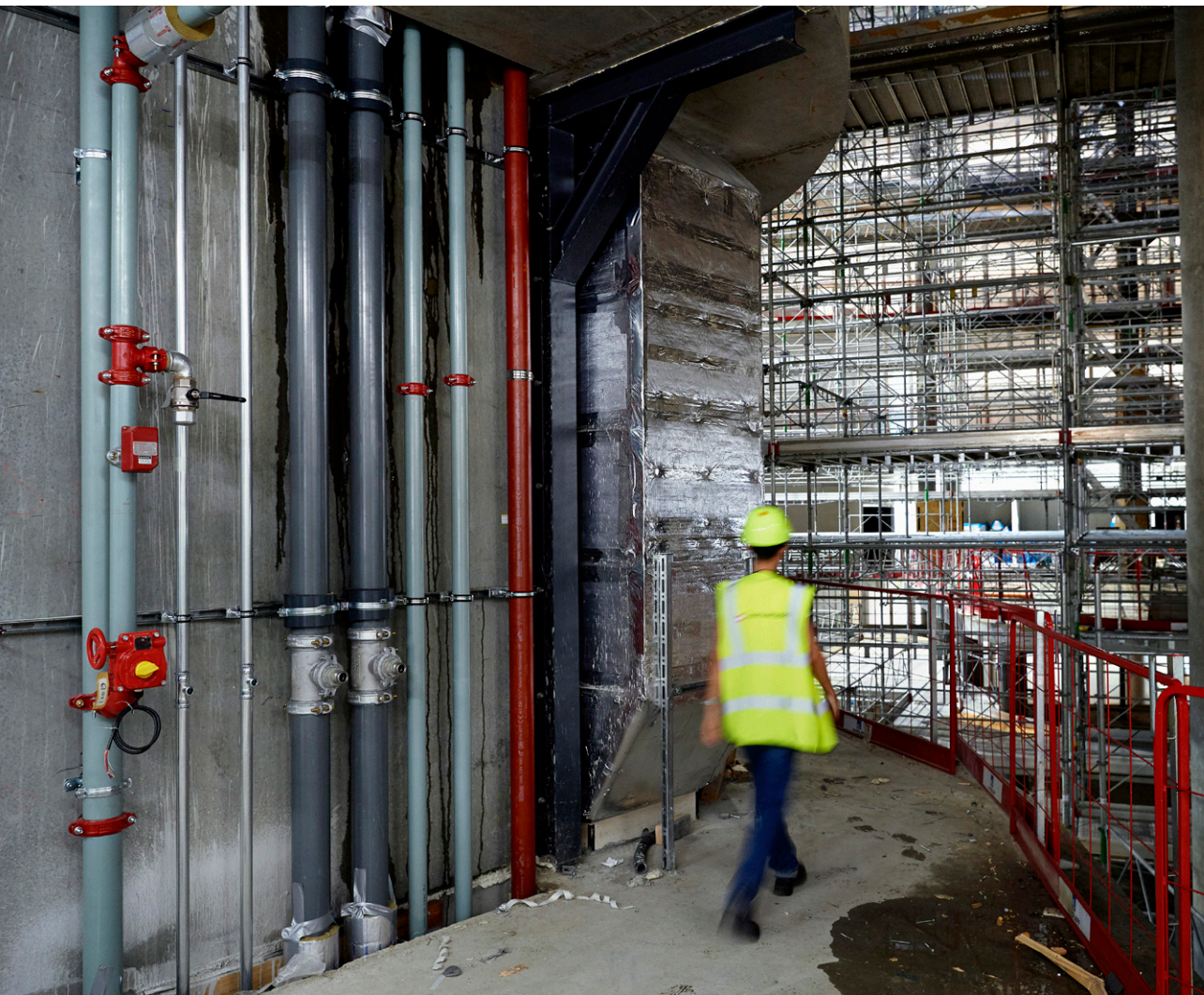
2020/21: 208M

EBIT margin

31%

2020/21: 4.4%

TECHNICAL SOLUTIONS



Revenue

1,706_M

2020/21: 1,342M

Segment results (EBIT)

71_M

2020/21: 22M

EBIT margin

4.2%

2020/21: 1.6%

RAIL



Revenue

1.30M

2020/21: 916M

Segment results (EBIT)

21M

2020/21: 14M

EBIT margin

1.6%

2020/21: 1.5%

GROUND ENGINEERING



Revenue

2,307_M

2020/21: 2,038M

Segment results (EBIT)

91_M

2020/21: 126M

EBIT margin

3.9%

2020/21: 6.2%

PIPE TECHNOLOGIES



Revenue

1,663_M

2020/21: 1,639M

Segment results (EBIT)

105_M

2020/21: 117M

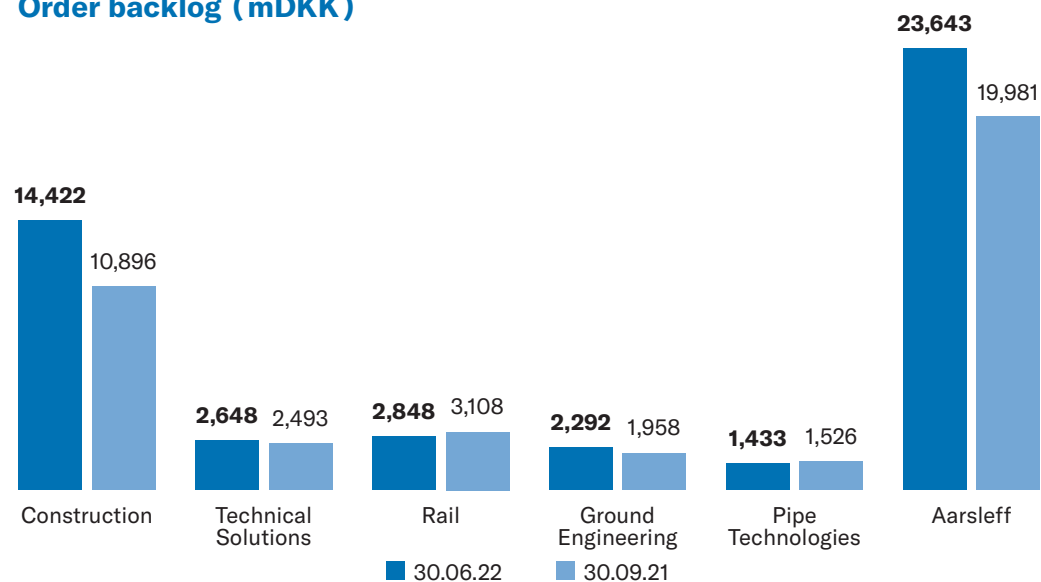
EBIT margin

6.3%

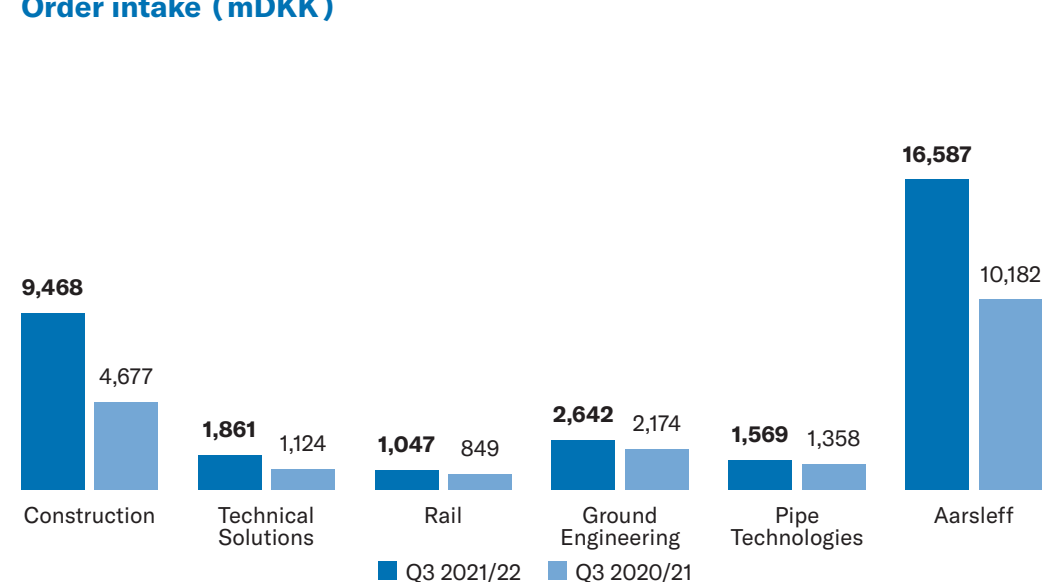
2020/21: 7.2%

ORDER BACKLOG AND ORDER INTAKE

Order backlog (mDKK)



Order intake (mDKK)





EXTENSION OF LARGE SWEDISH PORT

Sweden's biggest port for shipping of timber is Port of Varberg located an hour's drive to the South from Gothenburg. Here, Aarsleff provides new and modern facilities for the port operations, and the municipality of Varberg will establish residential buildings in parts of the old port. The project began in October 2021 and comprises a 325-metre-long new quay and a 140-metre-long new pier. Both parts are constructed as a pile deck. In front of the quay, we are dredging to a depth of 11 metres, and behind the quay, we are establishing a 90,000-square-metre port area primarily for storage of timber. In addition, we are to establish access road and railway track to the area. So far, our work has been focused on reinforcement of the existing hinterland to prevent settlement damage as well as stabilisation of the area behind the quay with lime-cement piles, and in September, we will start up the dredging work. The total project will be handed over in June 2024.



MORE STRENGTH FOR OUR CONCRETE ELEMENT FACTORY

Aarsleff's concrete element factory in Swinoujscie, Poland has invested in a new travelling crane. The crane, which can lift 250 tons at a height of 40 metres and spans more than 40 metres, is one of the biggest in Europe and it is ready for its first work tasks at the 250-metre-long inner track in the harbour basin. Over the years, huge amounts of reinforcement have been tied and thousands of concrete elements have been cast at the factory as prefabrication for different types of projects, e.g. foundations for offshore wind farms, pier heads for Port of Hanstholm and Port of Ystad, as well as more than 700 working platforms for offshore wind turbines. At the factory we also produce tunnel and bridge elements, elements for building construction, and lately we have produced 4,000 slab track elements for the light rail alignment comprised by Aarsleff's two contracts for the Greater Copenhagen Light Rail. The factory is a workplace for almost 200 Aarsleff employees.



TAKING AROS TO “THE NEXT LEVEL”

ARoS Aarhus Art Museum will be extended with a new underground gallery of 1,000 square metres and an enormous artwork called “the Dome” with a ceiling height of 15 metres and a diameter of 40 metres. The first signs of the large construction project are now showing in the centre of Aarhus, where the square Officerspladsen is converted into a construction site until 2025. Aarsleff is to construct the round and curved artwork as well as the subterranean gallery while showing consideration for the busy urban environment. To minimise noise and vibrations, we establish the 20-metre-deep construction pit with diaphragm walls. Several of the Aarsleff Group’s skills are involved in the project which is being developed continuously. In addition to the construction pit, Aarsleff executes the shell structure, whereas Wicotec Kirkebjerg A/S is in charge of the technical installations.



MAINTENANCE OF ODENSE TRAMWAY

This spring, Denmark's newest tramway was opened. Back in 2019, Aarsleff Rail A/S signed a 15-year contract for maintenance of the 14.5-kilometre double-track tramway through the city of Odense. The contract includes maintenance of catenary systems, transformer stations, interlocking systems, tracks, building maintenance and area maintenance, including cutting of 100,000 square metres of grass near the tracks, as well as cleaning. The work is undertaken by a team of about 10 employees – who are, by the way, using electric cars for transportation in connection with the daily tasks.



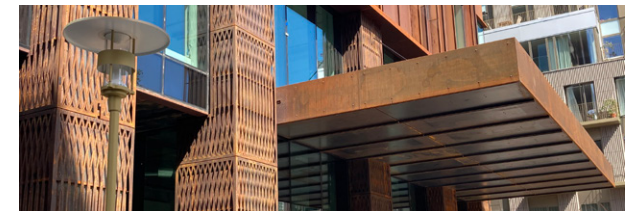
THE ROOF OF THE OCEAN HALL IS CLOSED

In the heart of Copenhagen, the complex building construction for the new Natural History Museum is progressing, and over the summer, we have closed the roof of the 23-metre-tall Ocean Hall permanently. The building has a super-elliptical dome with unique glass pieces and it will be a new landmark for the museum as well as for the city. Closing of the big and spectacular hall required careful planning and logistic ingenuity. Especially as the lifts which we had used for the execution had to get out through the roof – the only possible way out. Through an opening measuring 2.6 metres in width and 6.4 metres in length, we had just enough space to get the big lifts out. The Ocean Hall is 16 metres wide and 50 metres long. The dome is composed of 2,000 steel frames which were lifted in place and bolted together. Subsequently, the unique glass pieces were mounted piece by piece.



HANDING-OVER OF THE CARLSBERG CITY'S HIGHEST TOWER

In the Carlsberg City in Copenhagen, we will soon be handing over the capital's tallest residential building, the 120-metre-high Pasteur's Tower, as well as four associated buildings: The commercial and residential buildings Bønecke Hus, Kløcker Hus, Steenstrup Hus and Rothe Hus – a total of 76,400 square metres of new construction, inclusive of 25,000 square metres of basement. The work is carried out in a design and build contract and began in the summer of 2018 after a phase with early involvement, during which we collaborated with architects, consultants and client about the design of the building. In the design and build contract, we were able to draw on Aarsleff's own expertise within ground engineering, construction, building and design, and our subsidiary Wicotec Kirkebjerg was in charge of all technical installations. This means that a large part of the project was carried out in in-house production.





BALTIC PIPE – NORWEGIAN GAS THROUGH DENMARK

In the late autumn 2020, Per Aarsleff A/S signed a contract with Energinet, in joint venture with two German partners, for the establishment of the gas pipeline Baltic Pipe in Jutland. The main purpose of the project is to supply Norwegian gas to Poland and reduce the country's CO2 emission. The main part of the project was put on hold for eight months due to a withdrawn environmental approval, however we started up again in March. The pipeline has been high priority, and for this reason we doubled our staff as well as our equipment, so the project employed a total of 600 employees of which 50 came from Aarsleff. During the summer, we installed the last part of the 58-kilometre pipeline – divided into three sections.



MORE FOCUS ON CABLES AT PETRI & HAUGSTED

In connection with the establishment of the Greater Copenhagen Light Rail, Petri & Haugsted AS carries out a number of cable projects for the different pipe owners. This includes for example new fibre and telecommunication cables as well as relaying of cables for Andel Lumen, who is in charge of supply and installation of new light masts along the entire light rail section. Petri & Haugsted also installs new power cables, power poles and supply for lighting. For many years, Petri & Haugsted has focused primarily on fibre and telecommunication cables, and with the large new cable projects and the general need for a strong infrastructure in relation to the green transition, Petri & Haugsted will focus exclusively on cable and pipe projects in Denmark in future.



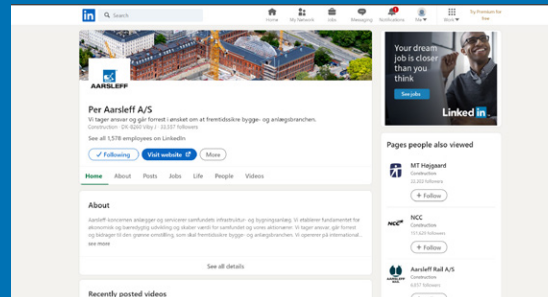
THREE NEW COMPANIES IN THE GROUP

In the latest financial period we have welcomed three new companies in the Aarsleff Group. BL Grundvandssænkning A/S is based in Haderslev and has 18 employees. With more than 20 years of experience with groundwater lowering, the company will strengthen Aarsleff's skills and capacity within the area. Kurt Jensen Maskinfabrik A/S has been acquired by Wicotec Kirkebjerg A/S to meet the great demand within stainless pipe installations for the water and wastewater area as well as the entire pharma industry. The company has 20 employees and 4,000 square metres of production facilities placed in Otterup on Funen. Finally, Aarsleff Rail A/S has purchased 66.6% of the shares in the Norwegian company Trym Anlegg AS, which is a project-based company within the railway and construction segment with head office in Trondheim and a total of 90 employees.

FIND US HERE



Do you want to know more about our expertise? Visit www.aarsleff.com



Do you want the latest Aarsleff news? Follow us on LinkedIn



Do you want to learn more about our world? Move around in Aarsleff World at www.aarsleff.com